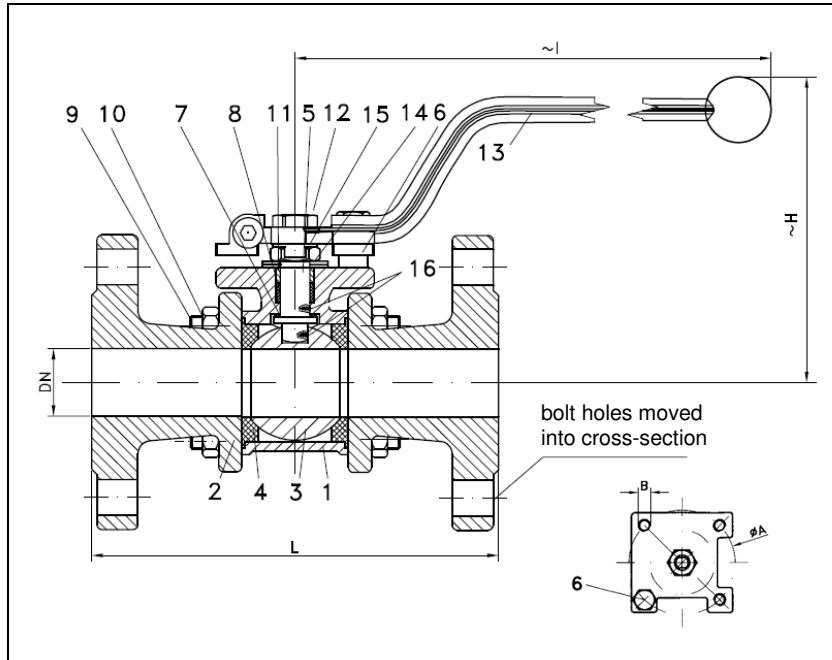


BALL VALVES RK-PROBALL

KH 3T F (NC), DN15 - DN100, PN16/40
casting lever



Ball valves RK-Proball KH 3T all sizes are also available with pneumatical, electrical or hydraulic actuators.

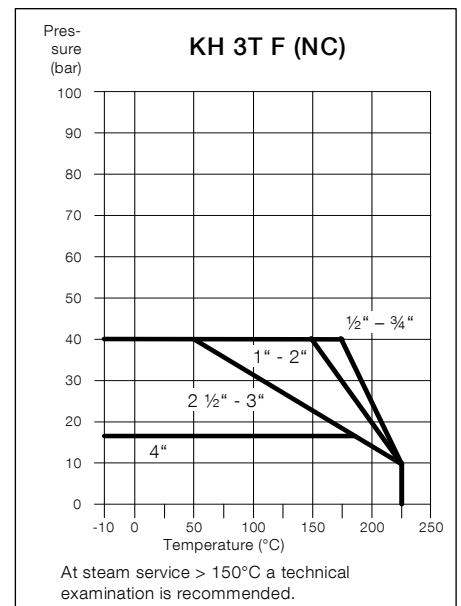
No.	Part	Material	Material
1	body	1.0619	1.4408
2	cap	1.0619	1.4408
3	ball	1.4408	
4	seat	KFG	
5	stem	1.4401	
6	stop pin	1.4301	
7	washer	KFG	
8	stem packing	KF	
9	hex. screw	A2-70	
10	hex. nut	A2-70	
11	thrust washer	1.4301	
12	hex. nut	A2-70	
13	lever	1.4301	
14	plate spring	1.4310	
15	locking plate	1.4301	
16	antistatic element	1.4401	

Flanged ball valves
full bore
face to face acc. to EN 558, GR. 1
flanges acc. to EN 1092

Specification:

Three-piece ball valve, flanges acc. to EN 1092, face to face dimensions acc. to EN 558, GR. 1, full bore, blow-out-proof stem, body material stainless steel (1.4408) or steel (1.0619), antistatic device, free of non ferrous metals, seat KFG, stem packing KF, disc spring loaded adjustable, top flange DIN EN ISO 5211, approved by PED, certified acc. to GERMAN clean air act VDI 2440, with lever.

Marking: RK-Proball
Types: KH 3T F (NC)-1.0619
KH 3T F (NC)-1.4408



Ordering example:
KH 3T F (NC), DN50, PN 40, 1.4408

Dimensions

DN mm	PN	dimensions (mm)			top flange ISO 5211			Kv-value m ³ /h	torque Nm	weight kg
		H	I	L	Ø A	B				
15	40	86	169	130	F04	42	M5	10	5	2.1
20	40	93	169	150	F04	42	M5	25	10	2.9
25	40	105	222	160	F05	50	M6	35	11	3.9
32	40	110	222	180	F05	50	M6	46	20	5.6
40	40	124	222	200	F05	50	M6	80	26	7.4
50	40	146	304	230	F07	70	M8	110	30	10.3
65	40	170	304	290	F07	70	M8	310	70	14.4
80	40	176	354	310	F10	102	M10	360	90	23.8
100	40	207	354	350	F10	102	M10	820	120	37.2
100	16	207	354	350	F10	102	M10	820	120	34.3

06/2016

Subject to modification.